

# The County of Orange Report

Prepared for the Mesa Water District

January 20, 2022  
by Lewis Consulting Group

2022

## **New Congressional and Legislative Maps Adopted** **Let the Dominos Fall . . .**

Californians were treated to an early holiday present as the Independent Redistricting Commission released finalized maps prior to Christmas, instead of waiting for the December 27<sup>th</sup> deadline. The new lines have created political jousting with incumbents moving into brand new districts.

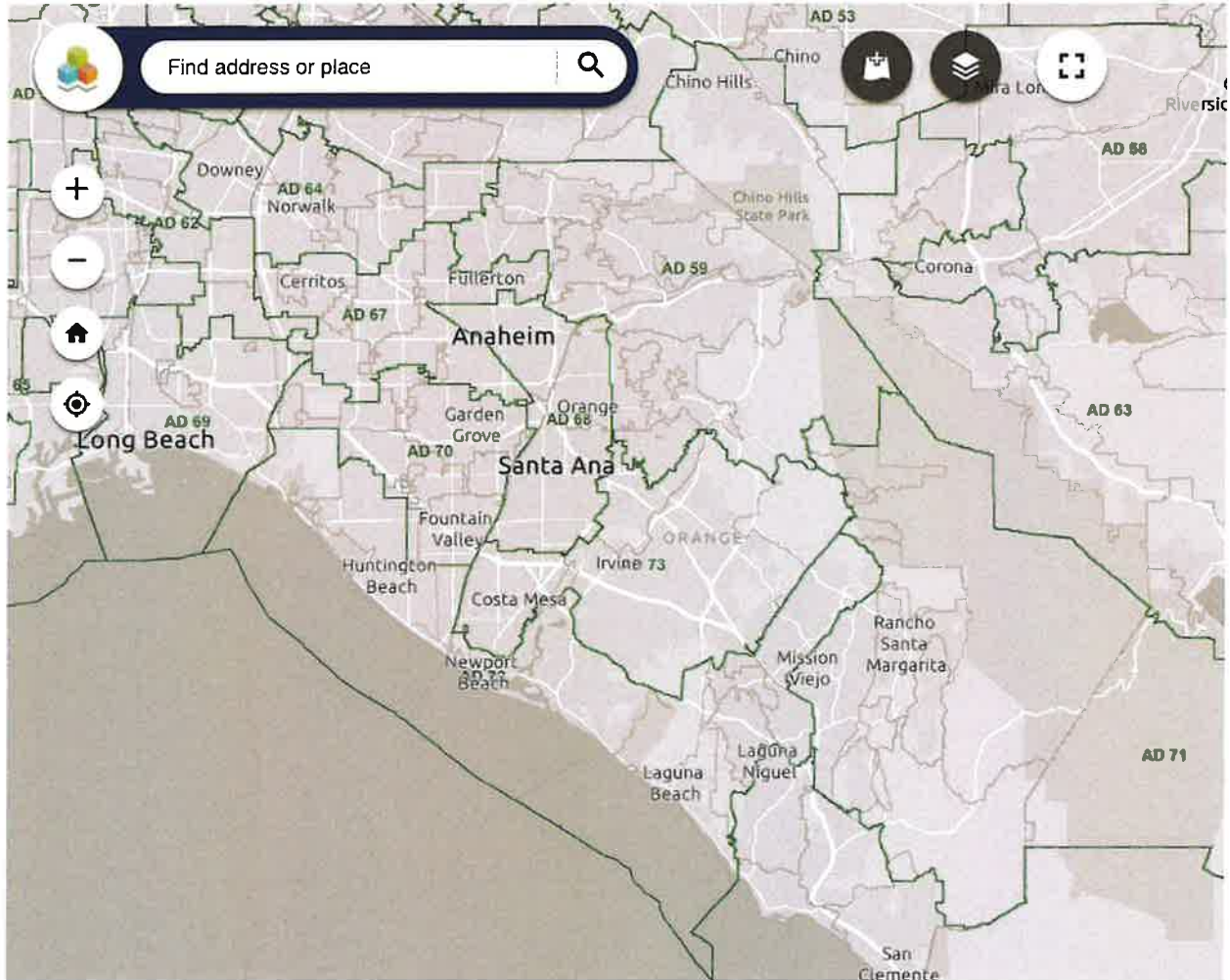
Some of the immediate and notable political consequences include Congresswoman Young Kim leaving most of her old district behind and moving to the new 40<sup>th</sup> C.D. which includes the Chino Hills and Yorba Linda portions of her “old district” but also adds much of Orange County’s most Republican cities. By doing that, Congresswoman Michelle Steel can move to a new district which includes the Little Saigon area, but also include Los Angeles County’s Cerritos and Hawaiian Gardens before curving around to include much of Fullerton. That move leaves a largely coastal district for Congresswoman Katie Porter which includes Huntington Beach, Costa Mesa and the more liberal enclaves of Irvine and Laguna Beach. Termed-out Orange County Supervisor Lisa Bartlett will seek election to the most southern Orange County Congressional District, which includes a large part of San Diego County. The new 47<sup>th</sup> C.D. will be a political slugfest between incumbent Katie Porter [D] and former GOP Assembly leader / County Chairman Scott Baugh. The race promises to be one of the nation’s most expensive races. The Michelle Steel seat, the Katie Porter seat and the South Orange County seat promise to be competitive; perhaps Orange County will determine which party controls the House of Representatives.

The newly drawn 36<sup>th</sup> State Senate seat, which comprises Little Saigon plus Orange County coastal cities has attracted the candidacy of Assemblywoman Janet Nguyen in her up or out battle. The State Assembly will feature an incumbent face-off between Democrat Cottie Petrie-Norris and Steven Choi as they play a game of “Lone Survivor”.

## **New Maps Dilute Orange County’s Political Representation**

In the last few decades, the emphasis on map compactness along with preserving the integrity of cities and counties has been de-prioritized in favor of more minority districts. At one time the goal was to keep counties whole if possible and if not, minimize County boarder crossings to two - once in and once out. That is now past history.

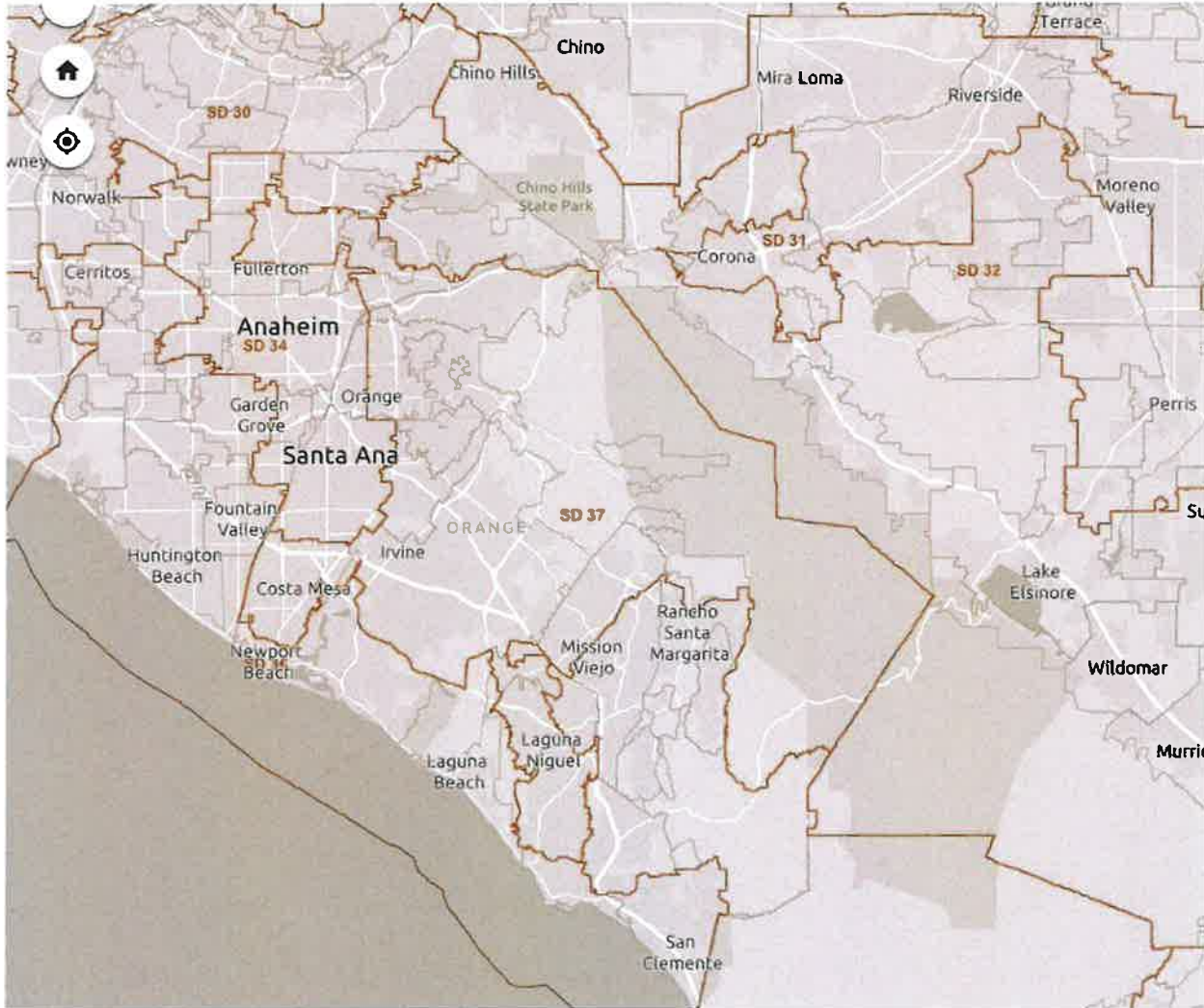
## Orange County Assembly Map



Under the new Assembly map, the City of La Habra is lopped off and combined into a Los Angeles County district. In another district, the cities of Mission Viejo and Rancho Santa Margarita are combined into a Riverside County district with the cities of Murrieta and Temecula. Lastly, the cities of Dana Point, San Juan Capistrano and San Clemente are placed into a San Diego County district with Oceanside and Vista.

In the Assembly, Costa Mesa and Newport Beach are placed in different A.D. districts.

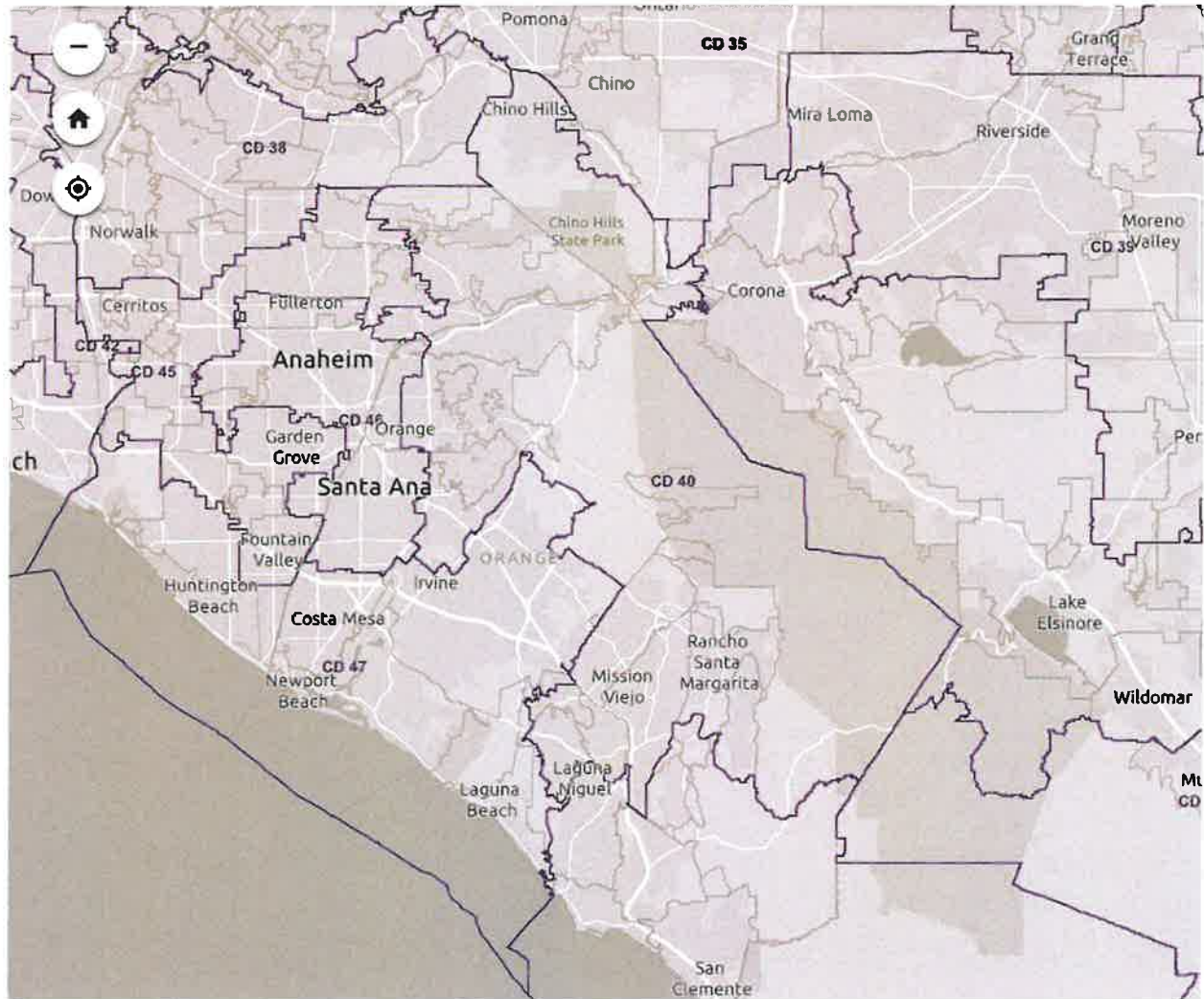
## Orange County State Senate Map



In the new State Senate lines, the City of Brea is placed in a Los Angeles County district, Yorba Linda is placed in a Riverside County district that includes Norco, Murrieta, and Temecula. Much of inland South Orange County is attached to a San Diego County district which nearly stretches to Mission Bay.

The cities of Costa Mesa and Newport Beach are placed in different S.D. districts.

## Orange County Congressional Map



In the Congressional lines, a Los Angeles County district swallows up La Habra. Also Dana Point, San Juan Capistrano and San Clemente are attached to a San Diego County district that runs south to Del Mar.

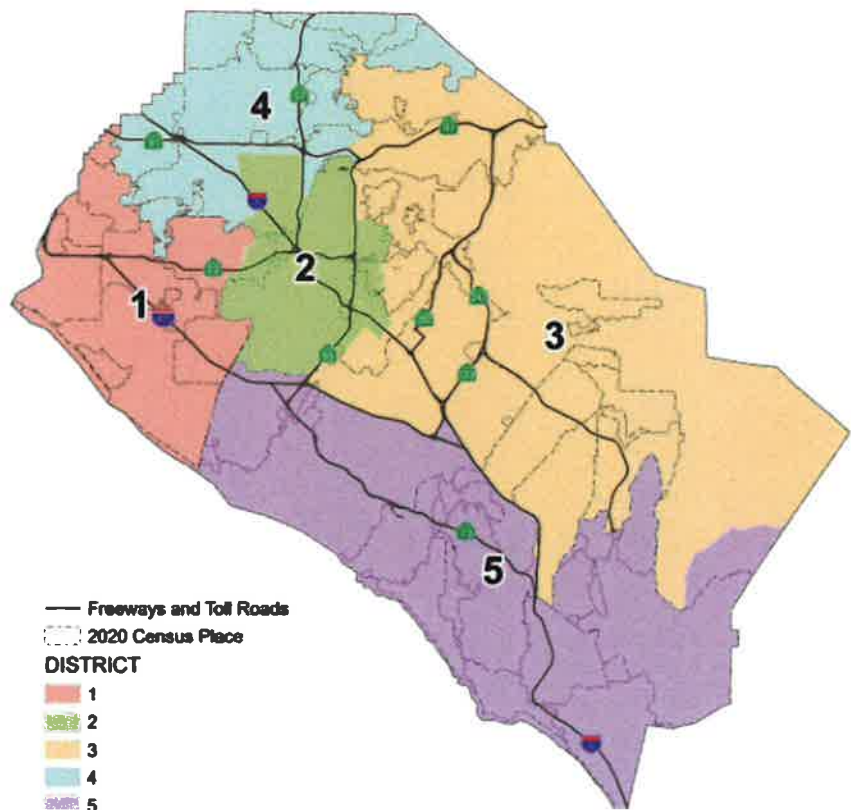
The cities of Costa Mesa and Newport Beach are united in the NEW C.D. 47<sup>th</sup>.

## **New Supervisor's Districts Set**

The long and tortuous road of adopting new Supervisor Districts is finally over. The process, which began in June with the Board's first public meeting, concluded at the November 22<sup>nd</sup> Board meeting with the selection of plan 5A-1.

Plan 5A-1 was one of eight plans originally submitted by the public. It was sponsored by a lengthy list of Orange County Progressive Organizations. During the process, Board offices added additional plans for consideration, bringing the total to 14 plans for consideration. The Board eventually whittled the proposed maps down to two, 5A-1 which was heavily amended and supported by Supervisor Doug Chaffee and plan 4C amended and championed by Board Chair Andrew Do. Both plans created a new heavily Hispanic district in Central Orange County to meet civil rights requirements. The Chairman Do plan (4C) attached the City of Costa Mesa to a heavily Asian and Republican district anchored by the cities of Westminster and Garden Grove. It also would not have elected a new Supervisor until 2024, meaning Supervisor Katrina Foley would have had no place to seek re-election. However plan 5A, which was described by an ACLU spokesman, as a plan to elect more Democrats, was adopted on a 3-2 vote with Supervisors Chaffee, Bartlett and Foley casting affirmative votes.

From a partisan political perspective, it appears going forward districts 2 and 4 will be safe terrain for Democrats, while District 1 should be in the Republican column. Part of the city of Irvine and all of Costa Mesa are attached to coastal Orange County cities; it appears Supervisor Foley will seek re-election in a competitive district. With 216,000 Irvine residents included in District 3, it makes Supervisor Wagner's district more competitive.



**NEW SUPERVISOR'S MAP**

**PROPOSAL 5A-Revision 1 with Technical Corrections  
County of Orange 2021 Redistricting**

**Table 4. Adjusted 2020 Census Population by District and 2020 Census Place**

<b>DISTRICT 1</b>			<b>DISTRICT 3</b>		
<b>Place</b>	<b>Total Population</b>	<b>Percent of District</b>	<b>Place</b>	<b>Total Population</b>	<b>Percent of District</b>
Cypress	50,235	8.3%	Anaheim*	56,099	8.4%
Fountain Valley	57,120	9.4%	Irvine*	216,560	32.5%
Garden Grove*	135,704	22.3%	Lake Forest	85,965	12.9%
Huntington Beach	199,033	32.7%	Mission Viejo	93,760	14.1%
La Palma	15,597	2.6%	Modjeska CDP	632	0.1%
Los Alamitos	11,795	1.9%	North Tustin CDP*	18,131	2.7%
Midway City CDP	8,845	1.5%	Orange*	33,354	5.0%
Rossmoor CDP	10,634	1.7%	Rancho Santa Margarita	48,000	7.2%
Seal Beach	25,283	4.2%	Silverado CDP	932	0.1%
Unincorporated	3,343	0.5%	Trabuco Canyon CDP	1,020	0.2%
Westminster	91,083	15.0%	Tustin*	30,955	4.6%
<b>District 1 Total</b>	<b>608,672</b>	<b>100.0%</b>	Unincorporated	6,066	0.9%
			Villa Park	5,850	0.9%
			Williams Canyon CDP	93	0.0%
			Yorba Linda	68,415	10.3%
			<b>District 3 Total</b>	<b>665,832</b>	<b>100.0%</b>
<b>DISTRICT 2</b>			<b>DISTRICT 4</b>		
<b>Place</b>	<b>Total Population</b>	<b>Percent of District</b>	<b>Place</b>	<b>Total Population</b>	<b>Percent of District</b>
Anaheim*	102,211	16.5%	Anaheim*	189,443	30.1%
Garden Grove*	36,642	5.9%	Brea	47,397	7.5%
North Tustin CDP*	7,618	1.2%	Buena Park	84,187	13.4%
Orange*	106,837	17.3%	Fullerton	143,930	22.9%
Santa Ana	311,393	50.3%	La Habra	63,234	10.0%
Tustin*	49,457	8.0%	Placentia	51,925	8.2%
Unincorporated	4,781	0.8%	Stanton	38,067	6.0%
<b>District 2 Total</b>	<b>618,939</b>	<b>100.0%</b>	Unincorporated	11,530	1.8%
			<b>District 4 Total</b>	<b>629,713</b>	<b>100.0%</b>
<b>DISTRICT 5</b>			<b>DISTRICT 5</b>		
<b>Place</b>	<b>Total Population</b>	<b>Percent of District</b>	<b>Place</b>	<b>Total Population</b>	<b>Percent of District</b>
Aliso Viejo	52,222	7.8%	Aliso Viejo	52,222	7.8%
Costa Mesa	112,139	16.7%	Costa Mesa	112,139	16.7%
Coto de Caza CDP	14,723	2.2%	Coto de Caza CDP	14,723	2.2%
Dana Point	33,144	4.9%	Dana Point	33,144	4.9%
Irvine*	91,398	13.6%	Irvine*	91,398	13.6%
Ladera Ranch CDP	26,188	3.9%	Ladera Ranch CDP	26,188	3.9%
Laguna Beach	23,061	3.4%	Laguna Beach	23,061	3.4%
Laguna Hills	31,399	4.7%	Laguna Hills	31,399	4.7%
Laguna Niguel	64,417	9.6%	Laguna Niguel	64,417	9.6%
Laguna Woods	17,658	2.6%	Laguna Woods	17,658	2.6%
Las Flores CDP	6,004	0.9%	Las Flores CDP	6,004	0.9%
Newport Beach	85,338	12.7%	Newport Beach	85,338	12.7%
Rancho Mission Viejo CDP	10,385	1.6%	Rancho Mission Viejo CDP	10,385	1.6%
San Clemente	64,384	9.6%	San Clemente	64,384	9.6%
San Juan Capistrano	35,271	5.3%	San Juan Capistrano	35,271	5.3%
Unincorporated	2,123	0.3%	Unincorporated	2,123	0.3%
<b>District 5 Total</b>	<b>669,854</b>	<b>100.0%</b>	<b>District 5 Total</b>	<b>669,854</b>	<b>100.0%</b>

\*City/CDP split by proposed district.  
Percent shares calculated using unrounded numbers, but table displays only to tenths; therefore, percents displayed may not sum to 100%.  
In line with previous board direction and in order to expedite proposal packages for consideration by the board, Proposal 5A-Revision 1 with Technical Corrections includes the technical correction of city splits in unpopulated areas.

## **State Redistricting Favors Democrats**

The State “Independent” Redistricting Commission managed to create more minority districts in California, but it also designed maps that look surprisingly like a Democrat gerrymander. According to the Cook Political Report, it’s “a huge win for Dems, all 42 of their incumbents get double digit Biden seats (two are merged to California’s seat loss). Meanwhile, five of California’s 11 GOP incumbents get more vulnerable.” The approved legislative lines appears to lock in democrat super majorities in both houses for the decade to come.

For those wondering how an independent Commission can create such seemingly partisan lines, check out this [2011 ProPublica article](https://www.propublica.org/article/how-democrats-fooled-californias-redistricting-commission) on the last redistricting.

<https://www.propublica.org/article/how-democrats-fooled-californias-redistricting-commission>

Has history repeated itself?



The January 12, 2022 OCLAFCO meeting resuming after going dark in December 2021 featured several items of interest. The first was mid-year budget adjustments -

- 1.) Staff will be receiving a 3.7% COLA
- 2.) Authorization for the hiring of two additional staff members to assist with future MSR's.

Both of these items can be accomplished without an overall budget increase.

The Commission unanimously re-elected Doug Davert and Don Wagner to serve as 2022 Chair and Vice Chair respectively. It was announced that public LAFCO Commissioner Derek J. McGregor has been appointed to the CAL-LAFCO Executive Board. Lastly, it was decided that the February 9<sup>th</sup> meeting will be held virtually.



## **Supervisors Elect New Officers**

The January 11, 2022 meeting of the Orange County Board of Supervisors was unusually short and lacking in substantive issues. However, the Board did elect new officers choosing Doug Chaffee to serve as Board Chair and Supervisor Don Wagner to serve as Vice Chair. Chaffee’s unanimous election was notable because it was the first time in many years a Democrat has been selected to Chair the Board. Supervisor Wagner was elected Vice Chair on a 3-1 vote, with Lisa Bartlett casting the dissenting vote. In recent

weeks, a schism has developed between Supervisor Bartlett and her two Republican colleagues Supervisors Do and Wagner.

The meeting also featured two disparate issues raised by members of the public. The first was from residents of the Silverado Canyon area thanking the County for their assistance with recent flood aftermath clean-up, but also pleading for more help with creek clean-up and debris removal.

Also, a number of people were referencing a recent report detailing inhumane food being served to those in the Orange County Jail system. It is alleged persons have been served boloney sandwiches three times a day for two years.



## Orange County COVID-19 Update Omicron SURGE Fills Hospitals, But Few Deaths Reported

ORANGE COUNTY COVID-19 STATS	01/20/2022	12/27/2021
CUMULATIVE CASES TO DATE	466,107	329,025
CUMULATIVE DEATHS TO DATE	5,946	5,877
DEATHS REPORTED TODAY	5	13
CUMULATIVE TESTS TO DATE	6,903,923	6,100,603
TESTS REPORTED THIS WEEK	251,069	96,337
CASES CURRENTLY HOSPITALIZED	1,183 *	282 *
CASES CURRENTLY IN ICU	199	66
CUMULATIVE RECOVERED TO DATE	323,606 *	307,898 *

\* = INCLUDES *ICU* CASES



## California's Christmas Present

Giving proof to the variability of weather, California's December deluge has brought copious amounts of snow to the Sierra range and has made a significant impact on California's drought status. It has also raised doubt about the permanent drought theory. This major storm has also occurred during a mild La Nina, making it even more spectacular.

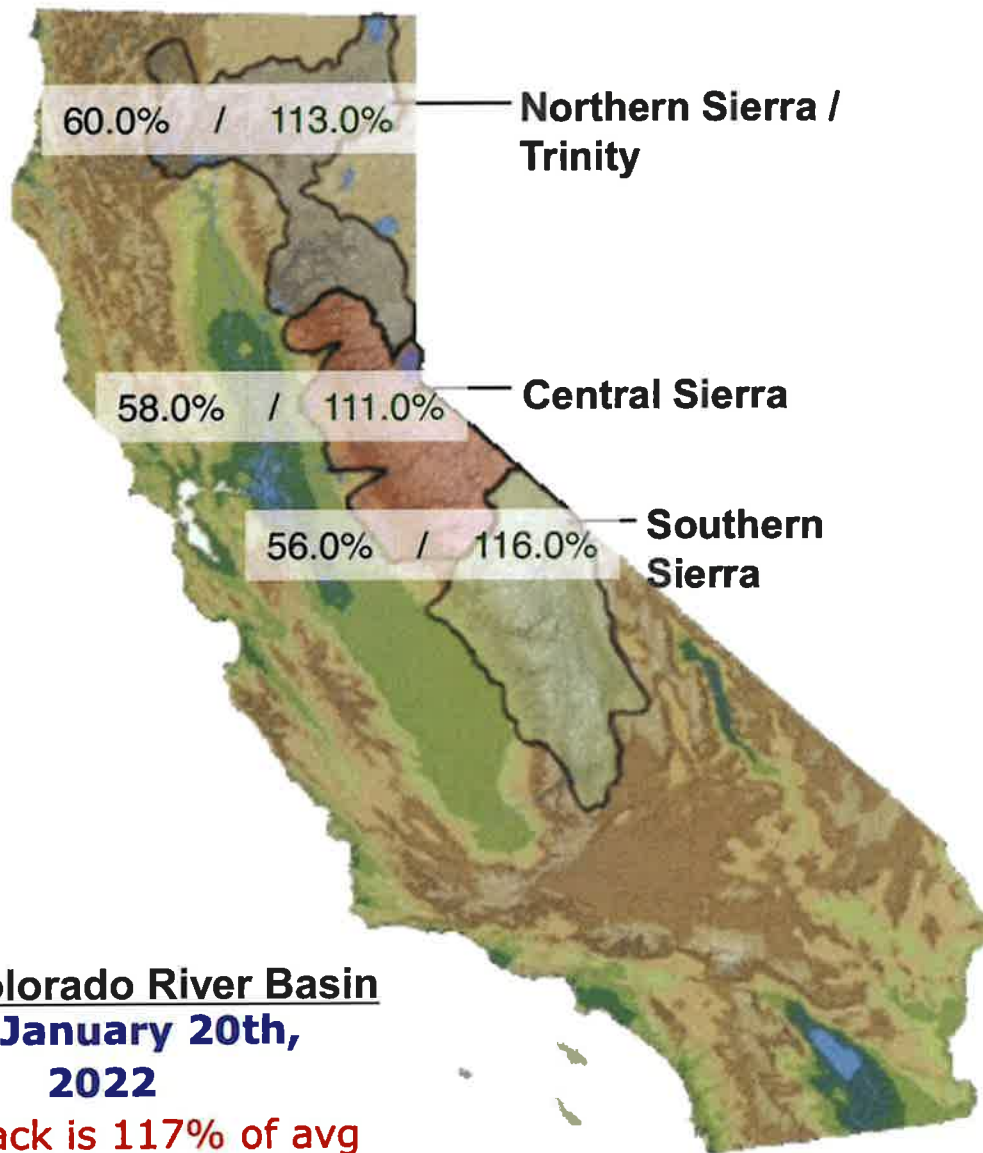


## Snow Water Equivalents (inches)

**Provided by the California Cooperative Snow Surveys**

**Data For: 20-Jan-2022**

% Apr 1 Avg. / % Normal for this Date



**Upper Colorado River Basin**  
**For January 20th,**  
**2022**

**Snowpack is 117% of avg**  
**TotalPrecip is 123.00% of**  
**avg**