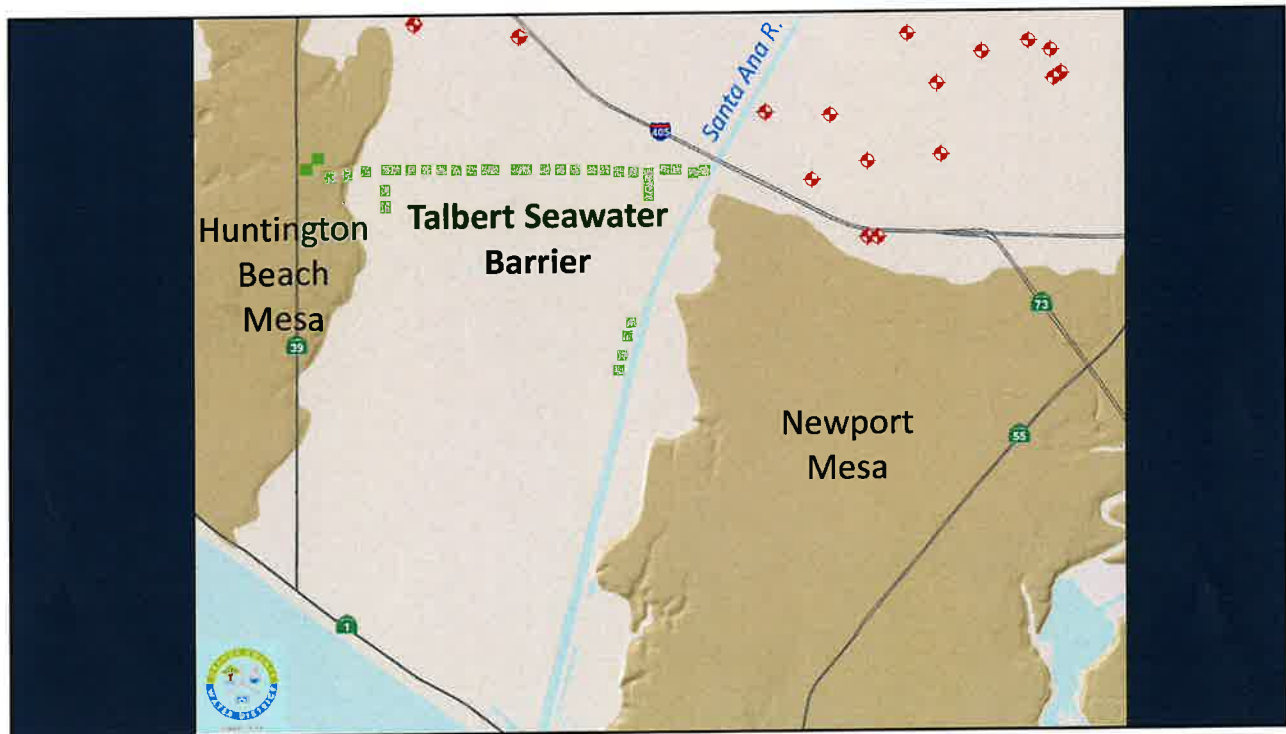
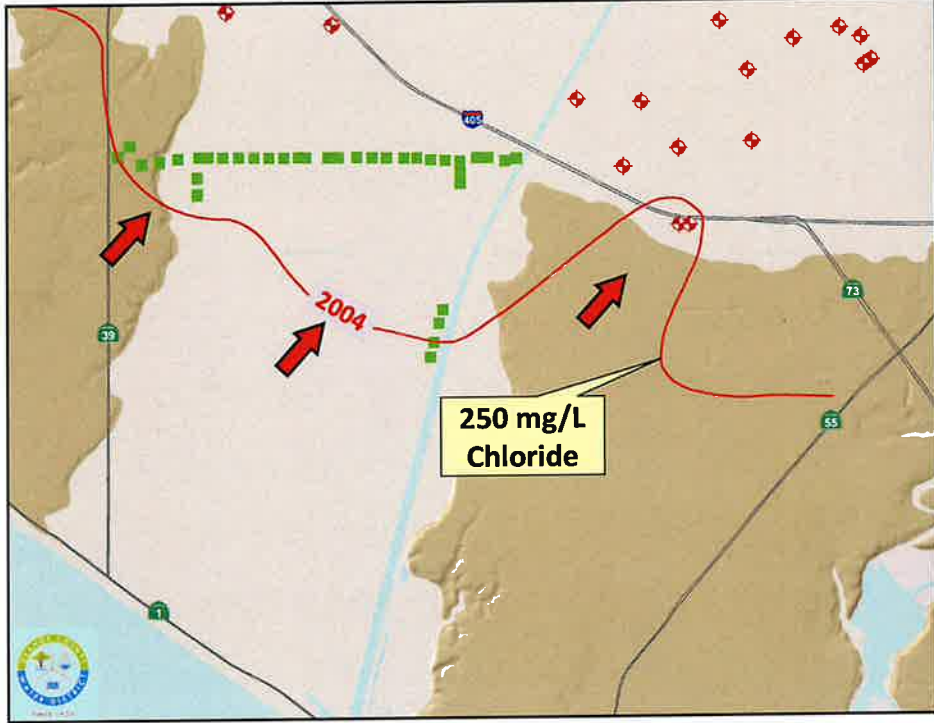




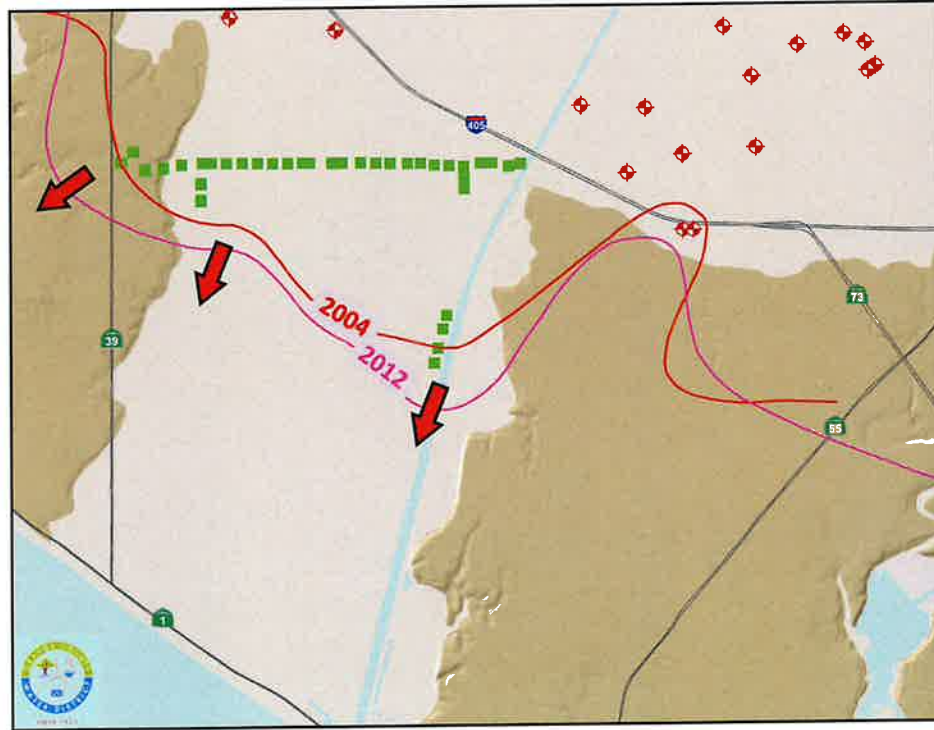
OCWD Coastal Area Update Water Year 2020-21

Mesa Water District Board of Directors Meeting
February 23, 2021

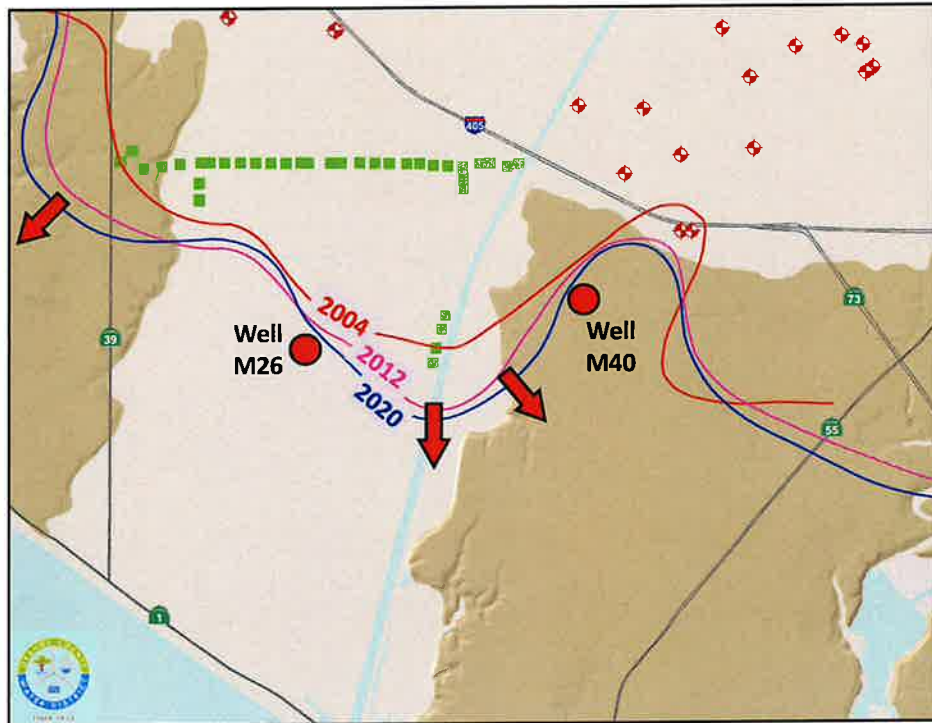




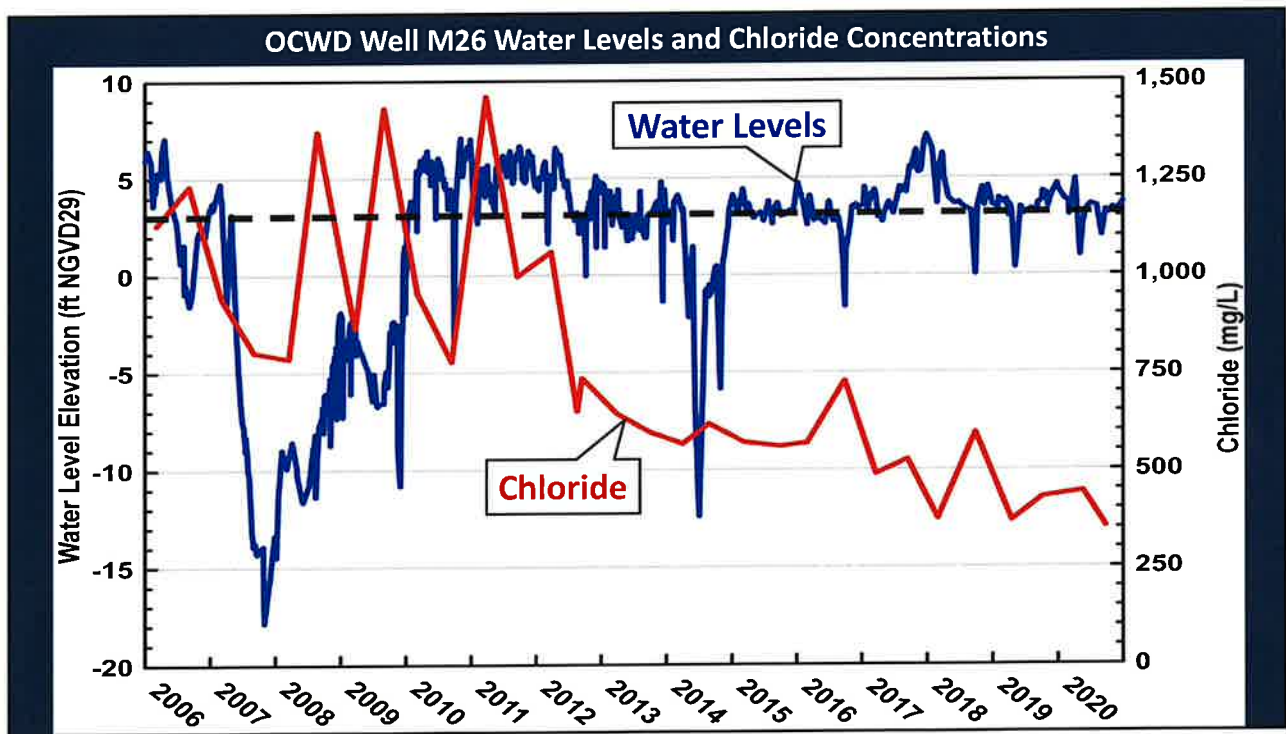
2004
Inland movement of chlorides (seawater intrusion) was occurring prior to GWRS completion in 2008.

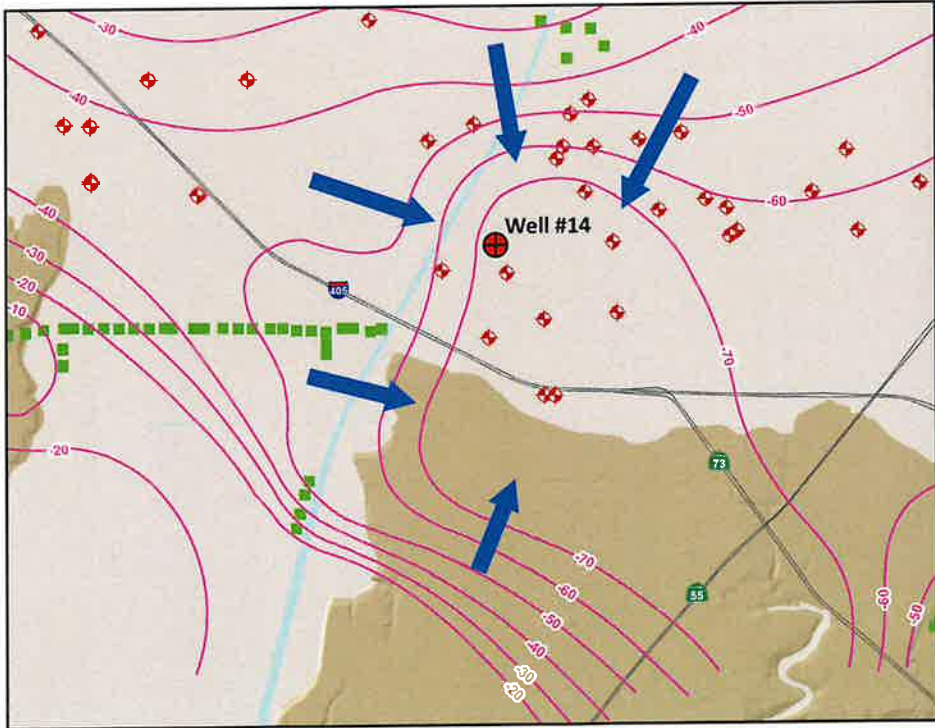
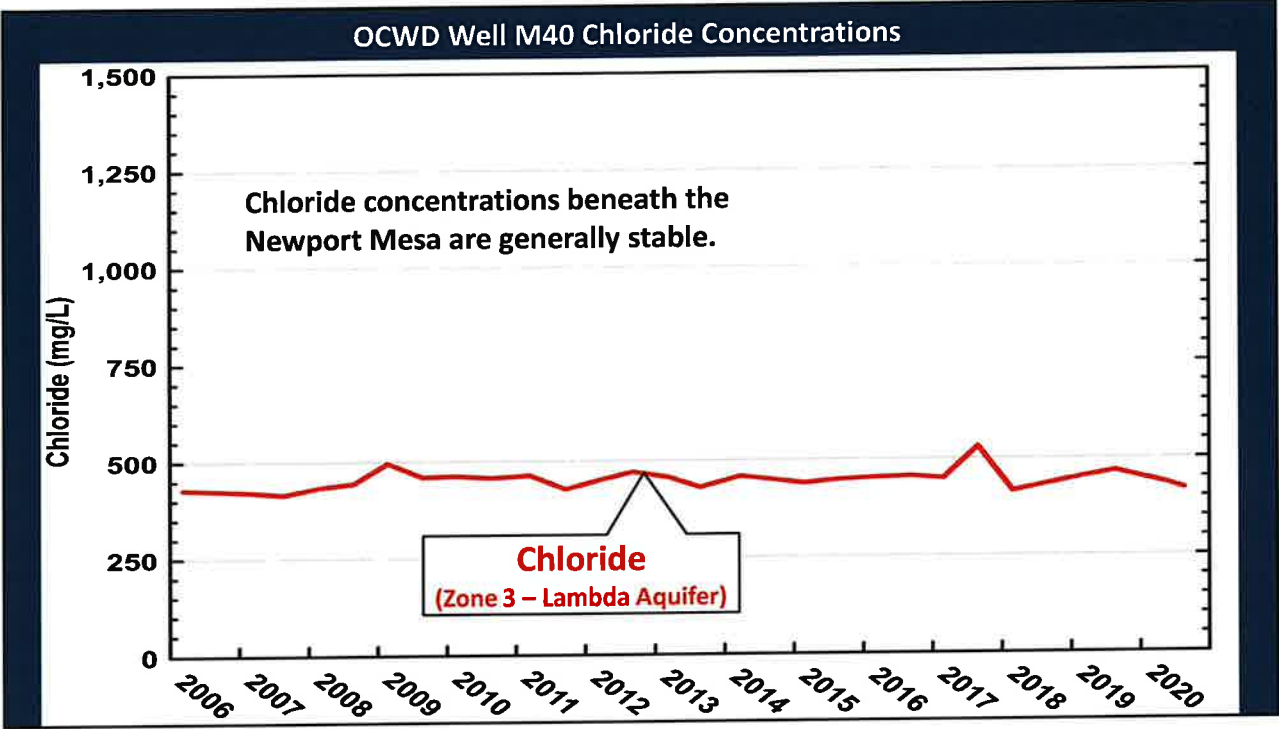


2012
Four years of doubling injection to 30 mgd began to reverse the inland movement of brackish groundwater.



2020
Seawater intrusion continues to be controlled by maintaining protective groundwater elevations.





Groundwater flows toward Mesa's wells from different directions.

Principal Aquifer Groundwater Elevations (feet MSL)

June 2020



**End of
Presentation**