



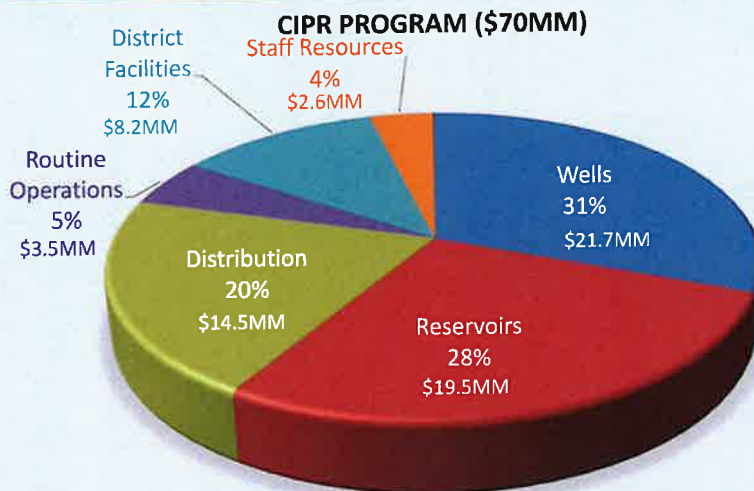
CIPR Program Quarterly Update



April 26, 2022

Overview

- 5 CIPR Programs
- 17+ Projects
- FY20 through FY23



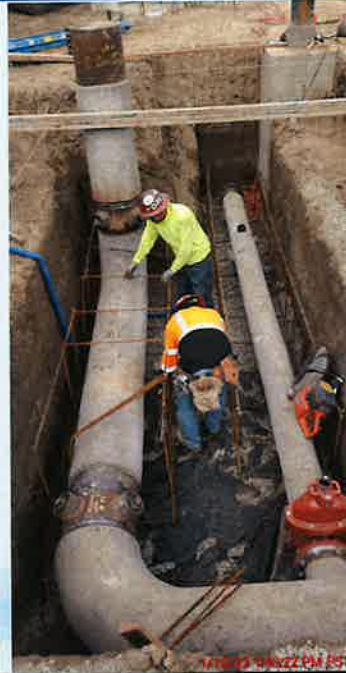
2 | April 26, 2022



Well Program

Chandler and Croddy Wells and Pipeline Project

- Demolition
- Well Drilling
- Well Equipping
- Pipeline Construction



Croddy Well Site
January 2022



3 | April 26, 2022

Well Program



Croddy Well Site
April 2022

Well Program



Well Program



Well Program

Pipeline

Phase 2:
2,200 LF of 16" DIP

Phase 1:
2,300 LF of 30" DIP



7 | April 26, 2022



Well Program



Chandler and Croddy
Well Pipeline
January 2022

8 | April



Well Program

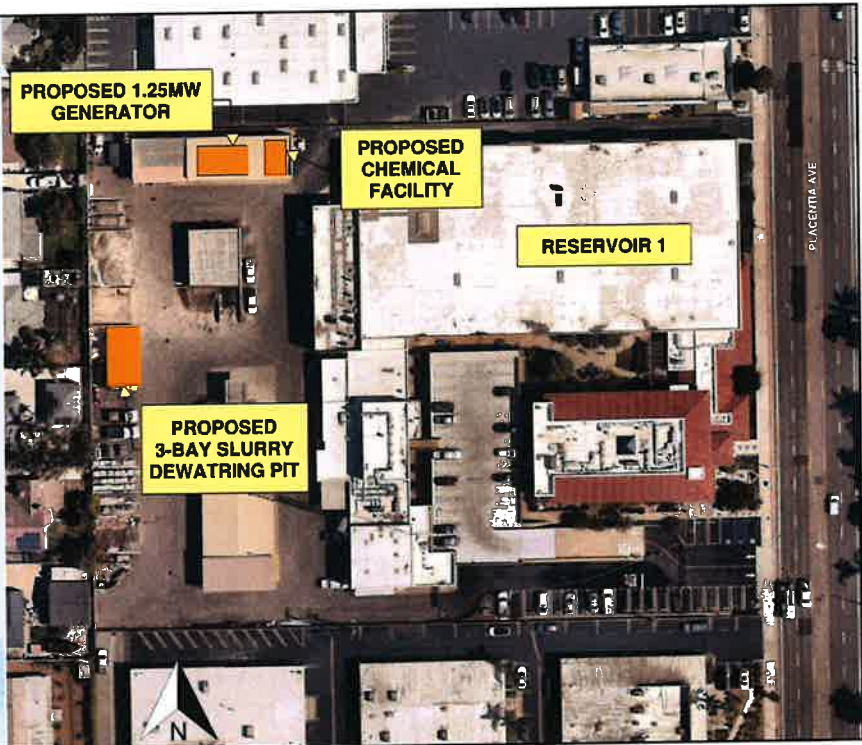


Chandler and Croddy
Well Pipeline
April 2022



9 | April 26, 2022

Reservoir Program



10 | April 26, 2022

Reservoir Program



Distribution Program

Wilson St. Pipeline Replacement



12 | April 26, 2022



Distribution Program



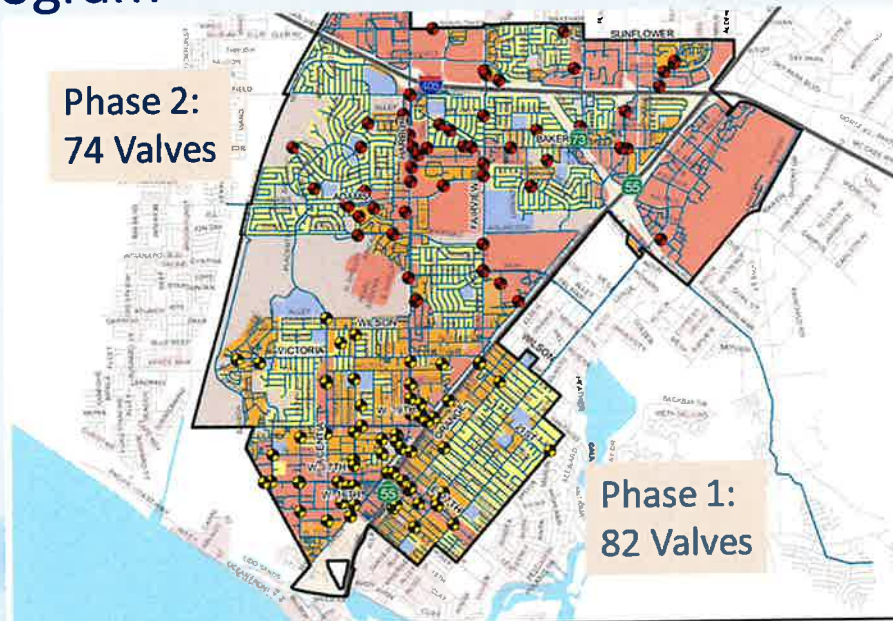
13 |

Distribution Program

Mainline Valve Replacement Project

Phase 2:
74 Valves

Phase 1:
82 Valves



14 | April 26, 2022

Distribution Program

Vault Rehabilitation and Abandonment Project



1

Distribution Program

Plastic Service Line Replacement Project



16 | April 26, 2022



Routine Planned Capital

Description	Plan Qty	Actual Qty	Plan Cost (\$)	Actual Costs (\$)
Hydrants	19	30	\$85,000	\$171,000
Mainline Valves	19	13	\$85,000	\$51,000
Service Lines	8	1	\$18,000	\$4,000
Small Meters	188	82	\$18,000	\$11,000
Large Meters	38	1	\$15,000	\$1,000
Total			\$221,000	\$238,000

17 | April 26, 2022



District Facilities Program

SCADA Control Room and Wet Lab Upgrades Project



District Facilities Program



MWRF Administration Building
January 2022

19 | Ap



District Facilities Program



MWRF Administration Building
March 2022

20 |



District Facilities Program



21 |

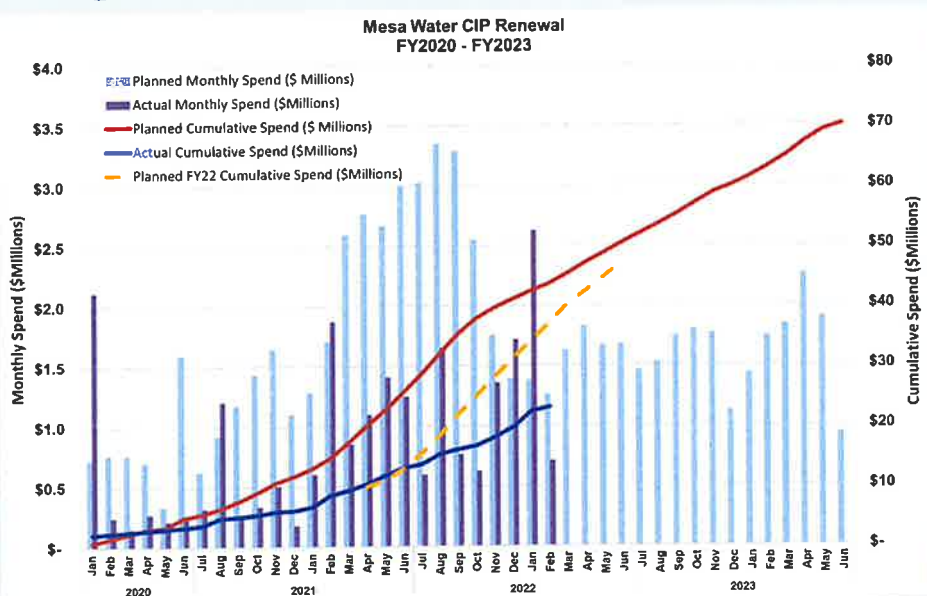
Financial Summary

Program	Program Cost	Existing Contracts	Actual Spent to Date
Wells	\$21,700,000	\$21,700,000	\$9,200,000
Reservoirs	\$19,500,000	\$2,600,000	\$995,000
Distribution	\$8,500,000	\$7,100,000	\$3,500,000
Routine Capital	\$3,500,000	\$3,500,000	\$2,250,000
District Facilities	\$8,200,000	\$8,100,000	\$2,270,000
Annual Programs, Staffing, and Other Agency Projects	\$8,600,000	\$8,600,000	\$4,900,000
Total	\$70,000,000	\$51,600,000	\$23,100,000

22 | April 26, 2022



CIPR Program Planned vs. Actual



23 | April



Questions?

24 | April 26, 2022



CIPR Program Cost Impacts

Project	Status	Baseline Cost	Actual Cost	Diff.
Wells Program				
Chandler & Croddy Wells & Pipeline	In Progress Per Plan	\$15,200,000	\$21,700,000	\$6,500,000
Reservoir Program				
Reservoir Chemical Management System	In Progress Per Plan. Included with Reservoirs 1 and 2 Pump Station Upgrades			
Water and Power System Reliability Assessment	Complete Per Plan	\$100,000	\$300,000	\$200,000
Reservoirs 1 and 2 Pump Station Upgrades	In Progress Per Plan	\$8,900,000	\$19,200,000	\$10,300,000
MWRF Back-up Power	Updated project scope	\$2,200,000	\$0	-\$2,200,000

25 | April 26, 2022



CIPR Program Cost Impacts

Project	Status	Baseline Cost	Actual Cost	Diff.
Distribution Program				
1951 Cohort Pipeline Replacement	Design will be completed and construction in years following CIPR	\$7,100,000	\$500,000	-\$6,600,000
Wilson St. Pipeline Replacement	In Progress. Executed separate from Cohort Project	\$0	\$2,800,000	\$2,800,000
Vault Rehabilitation and Abandonment	In Progress with reduced scope	\$4,000,000	\$1,200,000	-\$2,800,000
Mainline Valve Replacement	In Progress with reduced scope	\$3,000,000	\$2,500,000	-\$500,000
Cathodic Protection Improvements	Executed following CIPR	\$800,000	\$0	-\$800,000
Plastic Service Line Replacement	In Progress with reduced scope	\$1,600,000	\$1,100,000	-\$500,000

CIPR Program Cost Impacts

Project	Status	Baseline Cost	Actual Cost	Diff.
District Facilities Program				
SCADA Control Room and Wet Lab Upgrade	In Progress Per Plan	\$2,300,000	\$3,700,000	\$1,400,000
MWRF and Well Storage Buildings	In Progress, additional scope	\$500,000	\$1,600,000	\$1,100,000
MWRF Parking	Complete Per Plan	\$1,400,000	\$1,400,000	\$0
Education Program	In Progress Per Plan	\$1,000,000	\$1,100,000	\$100,000
Security System Replacement	Security white paper is complete and Final Design and Construction following CIPR	\$300,000	\$100,000	-\$200,000
Garage Storage	On Hold Per Plan	\$100,000	\$100,000	\$0
Dewatering Pit	In Progress Per Plan. Included with Reservoirs 1 and 2 Pump Station Upgrades			

CIPR Program Cost Impacts

Project	Status	Baseline Cost	Actual Cost	Diff.
Other Agency Projects	In Progress Per Plan	\$5,200,000	\$5,200,000	\$0
Routine Capital	In Progress Per Plan	\$3,500,000	\$3,500,000	\$0
Staff Resources	Per Plan	\$3,000,000	\$3,000,000	\$0
Contingency	Distributed to CIPR Projects	\$9,800,000	\$800,000	-\$9,000,000
Total		\$70,000,000	\$70,000,000	\$0